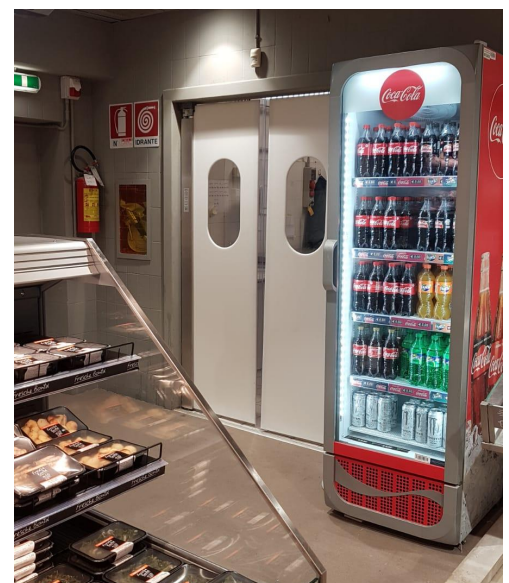




WINDOR FDA

Polyethylene swinging door
Manual and Automatic

The polyethylene swinging door Windor FDA has a solid structure made from AISI 304 stainless steel profile, certified for food environment use, resistant and hygienic, with transparent portholes. The clean design with no snag construction ensures perfect cleansing wash down and makes it a door suitable for supermarket sales points or in highly sanitised environments. Crossable in both directions, thanks to the bi-directional automation, it allows installation on escape routes.



The WINDOR FDA swinging door ensures almost unlimited continuity of operation over time, without any maintenance, thanks to the quality of the materials and the manufacturing techniques used.

A torsion spring during the opening phase accumulates the force impressed by the door leaf and returns it, thereby allowing it to close..

The AISI 304 Stainless Steel version is recommended for rooms requiring frequent cleansing in the food or chemical industry and in community centres.

In order to guarantee perfect operation over time, the hinged parts move on ball bearings.

Windor FDA doors are available with one or two panels, depending on the entry dimensions, and the central joining is fitted with an anti-crush device.



Technical features

Frame

Solid structure made from AISI 304 stainless steel profile, with dimensions suitable to ensure maximum swinging door resistance and elasticity. COIL snag-free stainless steel cover ensures perfect cleaning.

Door panels

Mounted on the upper and lower rotary supports with ball bearings.

Automatic self-closing

Device includes two torsion springs positioned on the top section and the lower guide supports. The spring torque is adjustable for the force required by the working conditions.

Rigid Polyethylene panels

Made from high-quality rigid polyethylene 15mm thick. This material has been approved for use in food processing for its features such as excellent lifetime, best resistance to impact, wide temperature variations, corrosion, fats and cleansing chemicals. This material also offers maximum resistance, easy wash down feature and practically requires no maintenance.

Transparent windows

incorporated at eye level, with special no-screw mounting, to avoid dirt gathering. Central soft plastic profile to prevent hand/finger crushing.

- No snag construction ensures perfect cleansing wash down
- Suitable for Panic Escape
- Door construction compliant with Safety Law EN 13241 for working rooms

COIL

SAM Swing Door modular automatic opening device

This device can operate automatically all types of swing doors currently existing on the market without any structural modification.

This system is particularly recommended for sanitation and environmental hygiene.

SAM SP is a version for bi-directional manual opening, with a light pushing, or with automatic control. The automatic opening control is available for single direction (SAM SE version) or automatic dual direction panel opening with remote command (SAM).

The SAM system includes the following components:

- a self-supporting box enclosure in galvanized steel or in AISI 304 stainless steel, complete with actuating stirrup and hinged plate, with an inspection lid.
- an air-loaded actuator (push action SAM SP) or electro-pneumatic (SAM SE and remote controlled SAM).
- pneumatic cylinder compliant to ISO standards with aluminium barrel.
- dual adjustable speed dampeners
- speed regulator
- air discharge regulator
- 5-way 24 Volt solenoid valve (SAM remote controlled)
- an electro-pneumatic control pan in a rugged cabinet featuring IP 55 protection and complying with latest EC/IEC 44/55 DIN regulations, provides full controls and functional interface.

The opening/closing speeds are adjustable individually for each door panel in both transit directions.

With the remote control version, the function logic can be programmed to hook up with traffic lights.

In case of power failure, the door can be opened manually without any danger of damage, and the torsion spring will provide automatic closing.

The SAM device accepts all COIL opening systems such as remote radio controls, mushroom button, and pull cord with IP 55 protection.



- Upper torsion spring mechanism
- SAM device, stainless steel casing, bi-directional automation
- Suitable for panic escape
- Radio remote controls eliminate hard wiring
- A major benefit of SAM system is its retrofitting

possibility for all existing swing door with no modification

The radio-controlled solution is easy to install and allows the complete absence of connection systems. This solution makes the SAM device already prepared for the use of radio frequency transmitters (remote controls) with 2 or 4 channels for the control of several doors independently.

Special versions

Upon request, Windor FDA is available with specific features such as:



Version FDA for technical areas



Version G for large stockrooms with overhead crane tracks.

Automatic sliding version in rigid polyethylene FDA RAIDOOR

Windor FDA is available with a single or dual sliding rigid panels is fitted with an electro-pneumatic automation system.

This solution allows the installation of an automatic door for personnel transit also in rooms where the space required for door panel swinging is not sufficient.

The special automation system program, which opens the door automatically in case of power shortage, can also be upgraded to a PANIC EXIT door opening option, making FDA RAIDOOR also suitable for installation on escape routes.



Framework

A compact steel profile construction with suitable dimensions to ensure maximum strength and good resilience. Housing cover made of AISI 304 brushed stainless steel.

Door wings

verhead mounting on rotary supports. Polyethylene panels. Fabricated from hi density extruded rigid Polyethylene sheet 15mm thick. This material has been approved for use in food processing areas and is widely used for this application due to its long service life, resistance to impacts, corrosion, fat, cleansing chemicals, wide temperature variations, as well as for its low overhead (high strength, cleansing facility and virtually maintenance free).

Clear windows

Installed at operator's eye level for good visual inspection. These windows are installed flush inside the door and the smooth, no snag mounting ensures minimal dirt buildup and easier cleaning.

Versions and dimensions

FDA RAIDOOR is custom made to the customer's specifications.

Single panel version:

max. dims. W 1300 x H 3000

Dual panel version:

max. dims. W 2400 x H 3000

RAIDOOR Modular automation device

This door sliding device, developed and patented by COIL, can be used to automate FDA RAIDOOR or other sliding door panels or flexible transparent PVC strip curtains.

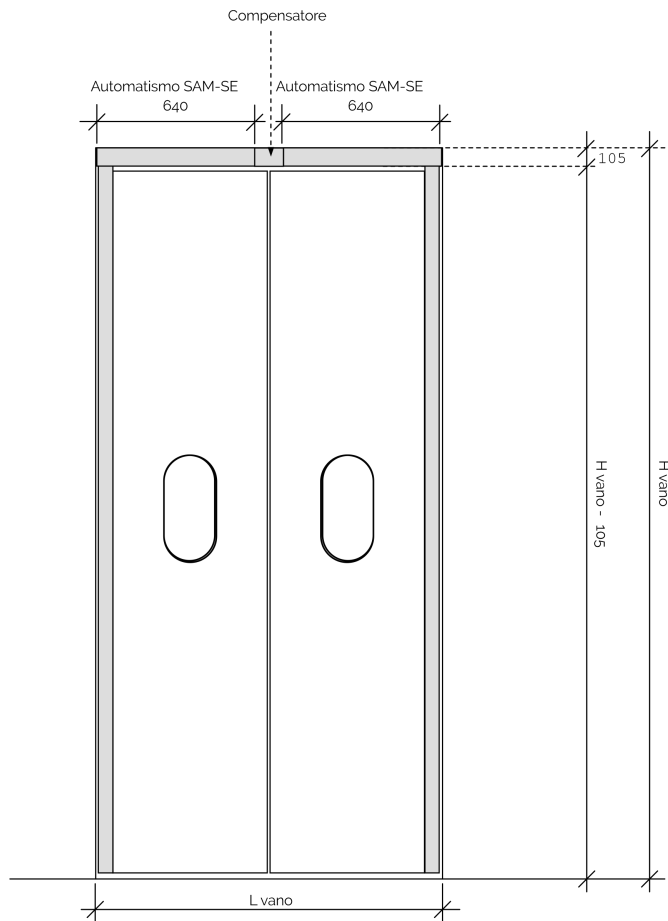
It is available in the following versions:

- **Remote controlled electro-pneumatics**
(standard model) complete with an electric control panel connecting the remote controls (pushbutton, pull cord, radar detector, etc.), and a filter regulator to check and lubricate plant air for the cylinders.
- **Remote controlled Ex-proof pneumatics**
This system uses plant air as the single supply for door operation. The pneumatic command panel is connected to all operating push buttons or pull cords. This system is ideal for ex-classified processing areas. In chemical or pharmaceutical industries, or for processing plants (e.g. food processing) where electric power cannot be used. The doors opening/closing speeds are adjustable. In case of power failure, the door can operate manually without damaging automatic controls.
- **Slide/swing door combination**
For special requirements, one door panel can slide sideways using FDA RAIDOOR, and the other panel can swing out using the SAM device. With a perfect slide/swing synchronized operation, this dual panel door arrangement can solve all kinds of room transit requirements.

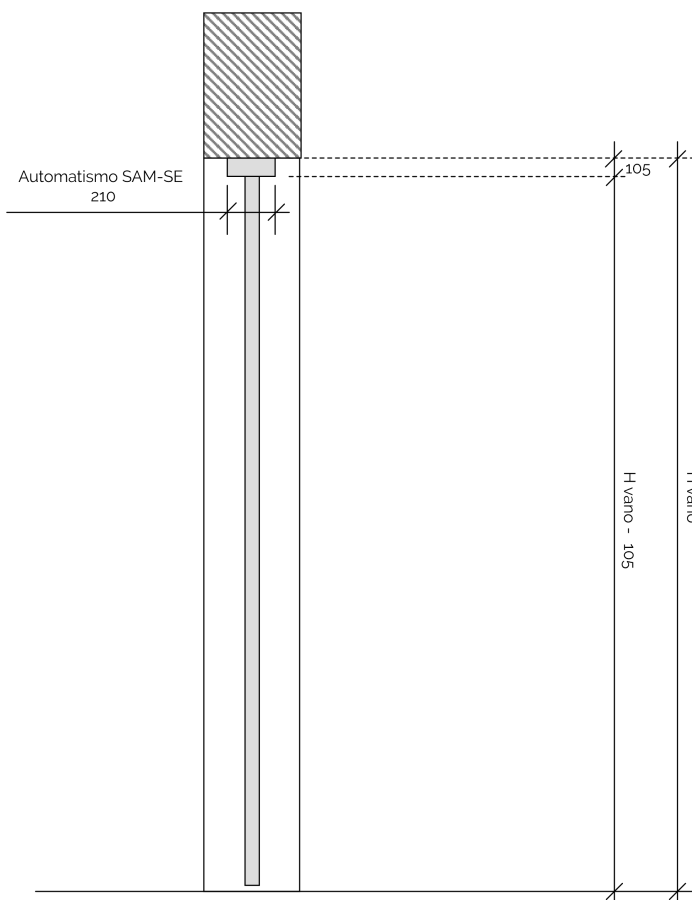
The RAIDOOR device is fitted with an automatic emergency feature which, remote controls (pushbutton, pull cord, radar detector, which in case of power failure, will activate the door opening.

It can also be fitted with an unique PANIC escape system for door panels to swing out completely.





Windor FDA
 Windor WFDA double action doors, with
 mono-directional electro-pneumatic device
 (measurements expressed in mm; not scaled).



Windor FDA Lateral section

Warranty

Manufactured with the best electronic materials and components, WINDOR FDA doors are tested in the most severe applications in industry and commerce and are covered by a standard 12-month warranty.

For more information:

Gruppo Graflex
Graflex S.r.l.
Via Risorgimento, 54
20017 RHO (Milano) - Italia

Sales Office
Tel.: +39 02 3565157
E-mail: sales@coil.it
www.coil.it

Enter the COIL site directly from your smartphone by scanning the QR code:



Note : The information contained in this document is descriptive and does not constitute a contract. Graflex Srl reserves the right to modify, even in part, the information contained in this document without notice, due to the continuous research and updating of its products.

COIL